

[Home](#) > Explain the working of internal expanding brake with neat sketch.

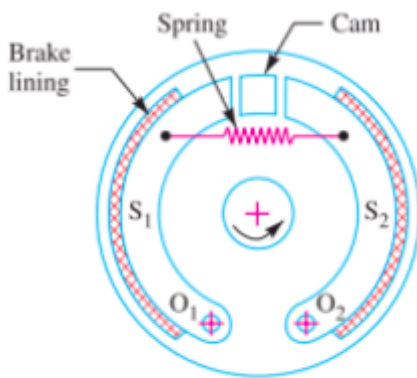
Explain the working of internal expanding brake with neat sketch.

Question:

Explain the working of internal expanding brake with neat sketch.

Answer:

Internal Expanding shoe brake:



(a) Internal expanding brake.

An internal expanding brake consists of two shoes S₁ and S₂. The outer surface of the shoes are lined with some friction material (usually with Ferodo) to increase the coefficient of friction and to prevent wearing away of the metal. Each shoe is pivoted at one end about a fixed fulcrum O₁ and O₂ and made to contact a cam at the other end. When the cam rotates, the shoes are pushed

outwards against the rim of the drum. The friction between the shoes and the drum produces the braking torque and hence reduces the speed of the drum. The shoes are normally held in off position by a spring . The drum encloses the entire mechanism to keep out dust and moisture. This type of brake is commonly used in motor cars and light trucks.
